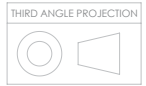


GENERAL DIMM TOLERANCES EXCEPT WHERE STATED
 GENERAL $\pm 2.0\text{mm}$ Length / $\pm 1.0\text{mm}$ Hole Hole
 ANGULAR $\pm 0^{\circ}30'$
 ALL DIMENSIONS IN MILLIMETRES
 UNLESS OTHERWISE STATED
 6mm Fillet Weld (z) WPS1
 UNLESS OTHERWISE STATED

DO NOT SCALE
 IF IN DOUBT PLEASE ASK



CLIENT:
Spence Construction

CONTRACT TITLE:
Blackhorse Road Station

DRAWING TITLE:
**Cladding Structure
 Panel Fixing**

CONTRACT No. 4848	QUOTATION No. 12221
-----------------------------	-------------------------------

DRAWING No.
4848-02-02

DRAWN BY KM	CHECKED BY NH
-----------------------	-------------------------

FIRST ISSUE DATE 20/11/2017	SHEET 1 of 3
---------------------------------------	------------------------

SCALE 1:80	SHEET SIZE A3 Landscape
----------------------	-----------------------------------

Revision A	01/03/2018	KM
Note added for finish of backing channel		

Revision B	21/03/2018	KM
Panels updated to suit revised structure		

Revision C	26/04/2018	KM
Updated to revised structure additional views added		

Revision D	28/06/2018	KM
Updated to site Dims		

Revision E		
----------------------	--	--

Revision F		
----------------------	--	--

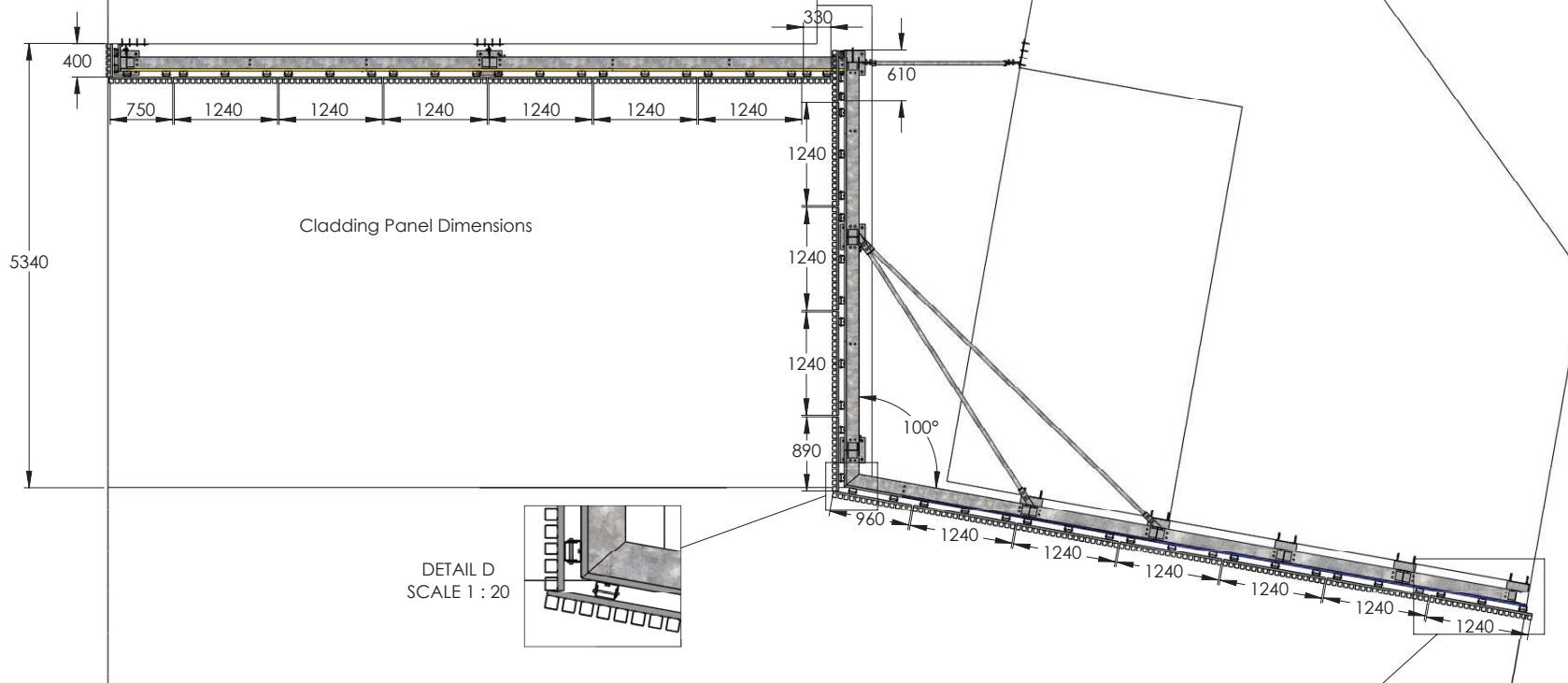
CLIENT APPROVED:

EN 1090 EXC2	YES	NO
NDT Req'd ?	YES	NO

ASSESMONT^{LD}
 STEEL FABRICATION & INSTALLATION
 SHOT BLASTING & POWDER COATING

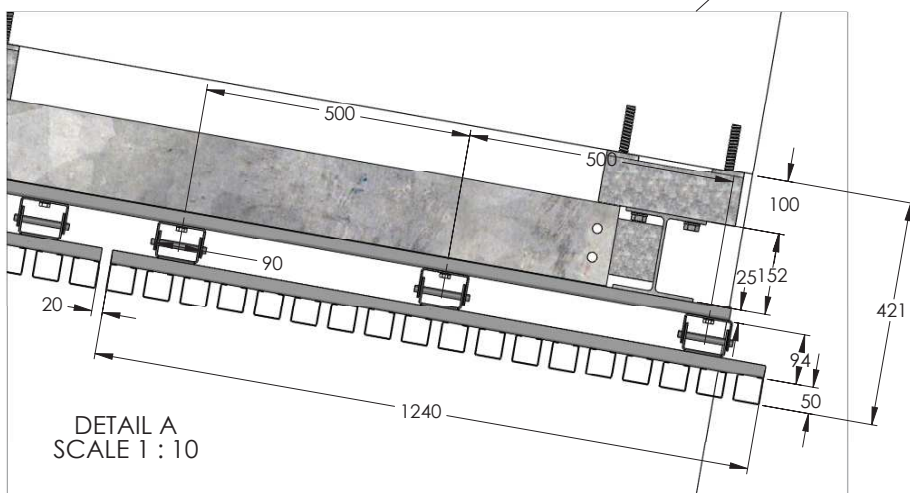
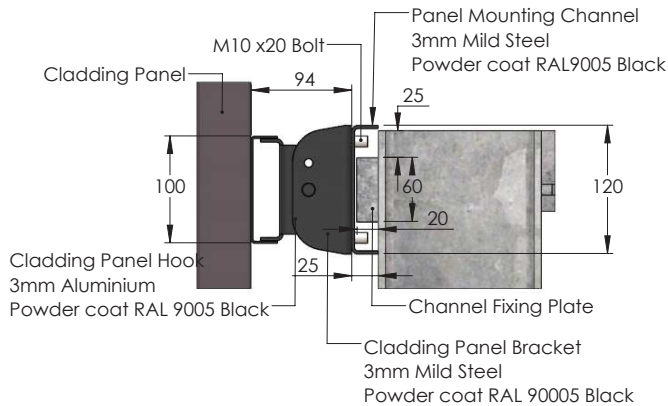
The copyright in this drawing is owned by Assesmont Ltd. It may not be published or reproduced in any material form without the express written consent of the Company.



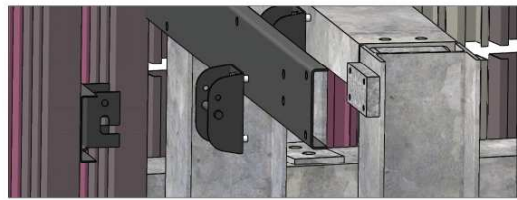


Cladding Panel Dimensions

DETAIL D
SCALE 1 : 20

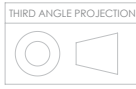


DETAIL A
SCALE 1 : 10



GENERAL DIMM TOLERANCES EXCEPT WHERE STATED
 GENERAL $\pm 2.0\text{mm}$ Length / $\pm 1.0\text{mm}$ Hole/Hole
 ANGULAR $\pm 0^{\circ}30'$
 ALL DIMENSIONS IN MILLIMETRES
 UNLESS OTHERWISE STATED
 6mm Fillet Weld (z) WPS1
 UNLESS OTHERWISE STATED

DO NOT SCALE
 IF IN DOUBT PLEASE ASK



CLIENT:
Spence Construction

CONTRACT TITLE:
Blackhorse Road Station

DRAWING TITLE:
**Cladding Structure
 Panel Fixing**

CONTRACT No. 4848	QUOTATION No. 12221
-----------------------------	-------------------------------

DRAWING No.
4848-02-02

DRAWN BY KM	CHECKED BY
-----------------------	------------

FIRST ISSUE DATE 20/11/2017	SHEET 1 of 1
---------------------------------------	------------------------

SCALE 1:60	SHEET SIZE A3 Landscape
----------------------	-----------------------------------

Revision A	01/03/2018	KM
Note added for finish on backing channel		

Revision B	21/03/2018	KM
Panels updated to suit revised stucture		

Revision C	26/04/2018	KM
Updated to revised structure additional views added		

Revision D	28/06/2018	KM
Updated to site dims		

Revision E		
----------------------	--	--

Revision F		
----------------------	--	--

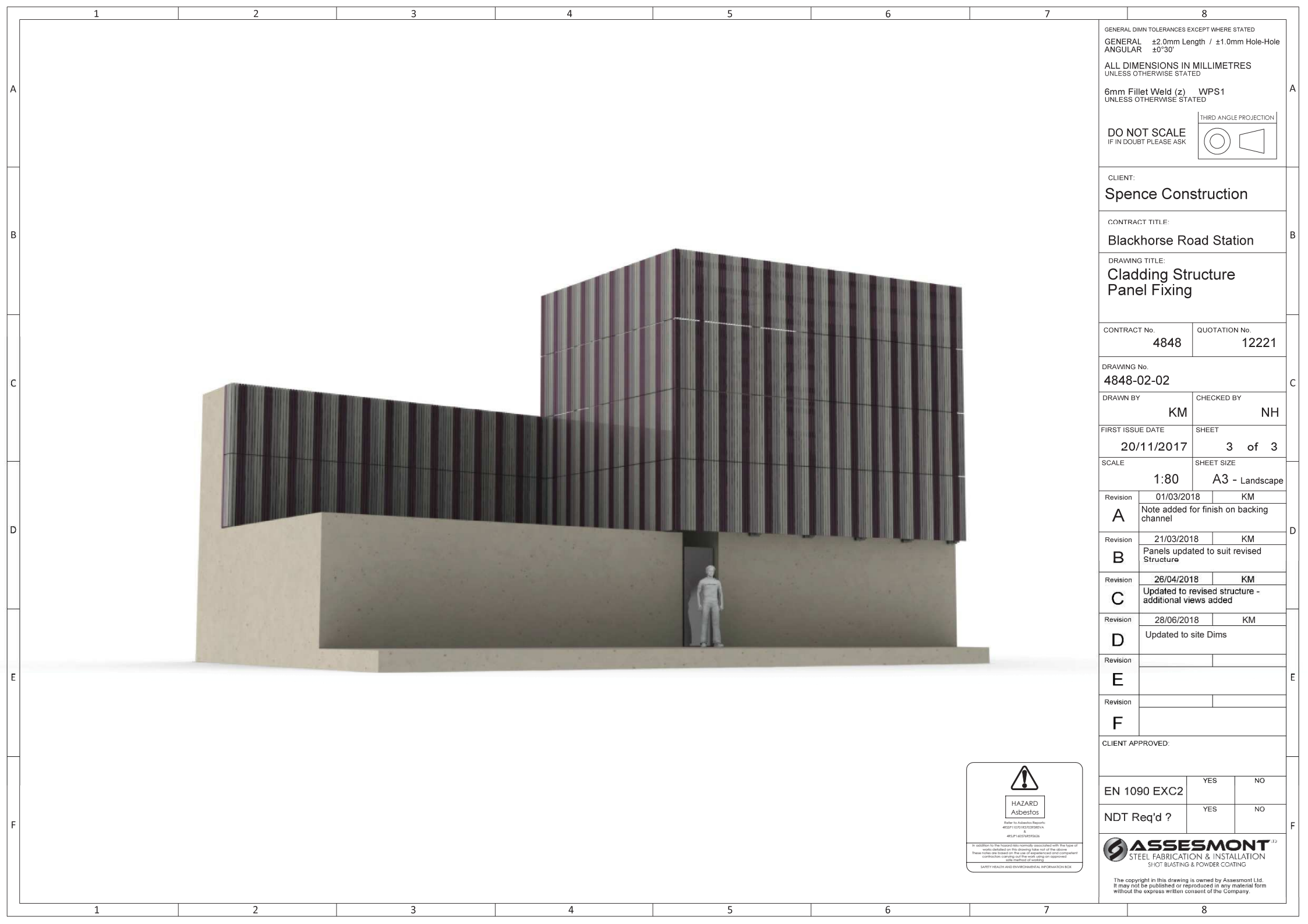
CLIENT APPROVED:

EN 1090 EXC2	YES	NO
--------------	-----	----

NDT Req'd ?	YES	NO
-------------	-----	----

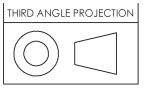


The copyright in this drawing is owned by Assesmont Ltd. It may not be published or reproduced in any material form without the express written consent of the Company.



GENERAL DIMM TOLERANCES EXCEPT WHERE STATED
 GENERAL ±2.0mm Length / ±1.0mm Hole-Hole
 ANGULAR ±0°30'
 ALL DIMENSIONS IN MILLIMETRES
 UNLESS OTHERWISE STATED
 6mm Fillet Weld (z) WPS1
 UNLESS OTHERWISE STATED

DO NOT SCALE
 IF IN DOUBT PLEASE ASK



CLIENT:
Spence Construction

CONTRACT TITLE:
Blackhorse Road Station

DRAWING TITLE:
**Cladding Structure
 Panel Fixing**

CONTRACT No. 4848	QUOTATION No. 12221
-----------------------------	-------------------------------

DRAWING No.
4848-02-02

DRAWN BY KM	CHECKED BY NH
-----------------------	-------------------------

FIRST ISSUE DATE 20/11/2017	SHEET 3 of 3
---------------------------------------	------------------------

SCALE 1:80	SHEET SIZE A3 - Landscape
----------------------	-------------------------------------

Revision A	01/03/2018	KM
Note added for finish on backing channel		

Revision B	21/03/2018	KM
Panels updated to suit revised Structure		

Revision C	26/04/2018	KM
Updated to revised structure - additional views added		

Revision D	28/06/2018	KM
Updated to site Dims		

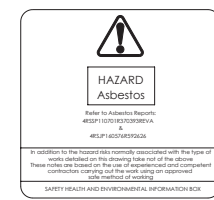
Revision E		
----------------------	--	--

Revision F		
----------------------	--	--

CLIENT APPROVED:

EN 1090 EXC2	YES	NO
--------------	-----	----

NDT Req'd ?	YES	NO
-------------	-----	----



In addition to the hazard risks normally associated with the type of work detailed on the drawing take note of the correct
 These notes are based on the use of experienced and competent contractors carrying out the work using an approved
 SAFETY HEALTH AND ENVIRONMENTAL INFORMATION BOX



The copyright in this drawing is owned by Assesmont Ltd. It may not be published or reproduced in any material form without the express written consent of the Company.